



COLORADO
Department of Education

Recruitment System of Support: RS2



Tuesday, October 9th, 3:15pm-4:30pm

Training

Cultivating the Mentality of a Recruiter

- Initiative for Independent Study
 - State ID&R Materials, NRG, State & Local ID&R Plans, National COE Instructions, OME Results Website (<https://results.ed.gov>)
- Formal Group/Individual Training
 - OME National Curriculum, customized to Colorado's program
 - Should be able to answer key questions related to eligibility, recruitment methods, communication skills, and state and local laws
 - Individual ID&R Plan key – reflection of one's work and goals
 - Are the goals SMART?
 - Specific, Measurable, Attainable, Realistic, and Time bound

Cultivating the Mentality of a Recruiter contd.

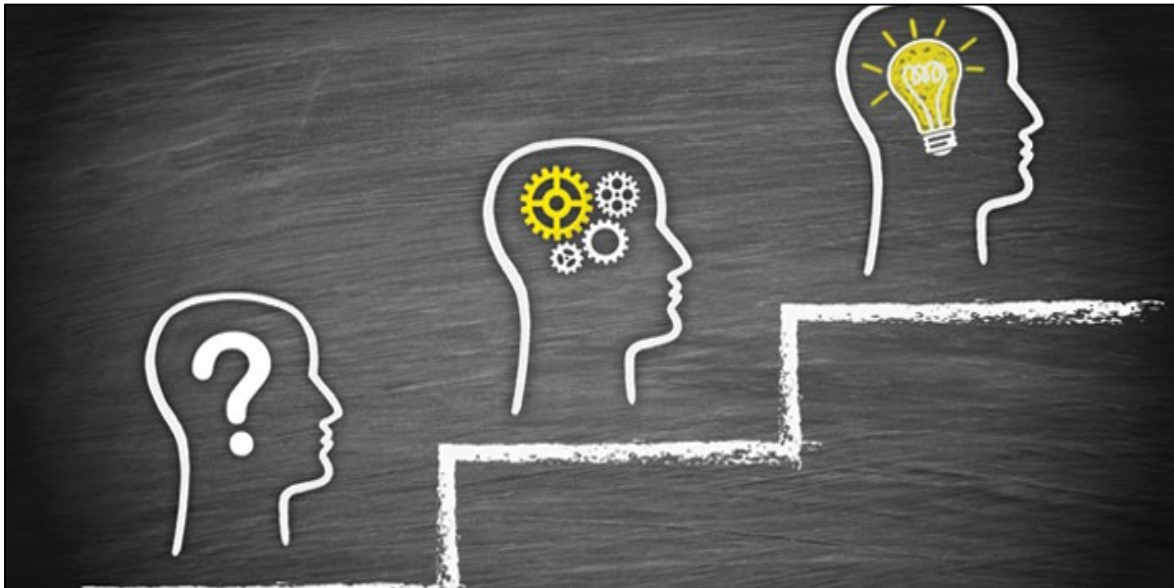
- **Field-based Training**
 - Pair new recruiter with a veteran recruiter to learn how to properly interview
 - Gradual acquisition of duties
 - Recruiter shadowing assessment tool (under development)
- **Continual Professional Development**
 - IRRC a helpful resource to provide additional support and professional development for veteran recruiters
 - On-the-job training, regular meetings with supervisor, recruiter support system

General ID&R Best Practices

- Regional Visits for State Data Specialists to answer Recruiters' questions on ID&R scenarios
 - Shadow Recruiters and offer tips, feedback after the interview
 - Relationship between Recruiter, Regional Data Specialists, and State
- Data error checks built into statewide database
- Agribusiness Visit Procedure - to determine qualifying work at new businesses (in development)
 - Does your State have a procedure in place for this? Thoughts?

Training Best Practices

- What are the best practices in training you implement in your State?
- What additional supports can you add to what was just presented on training?

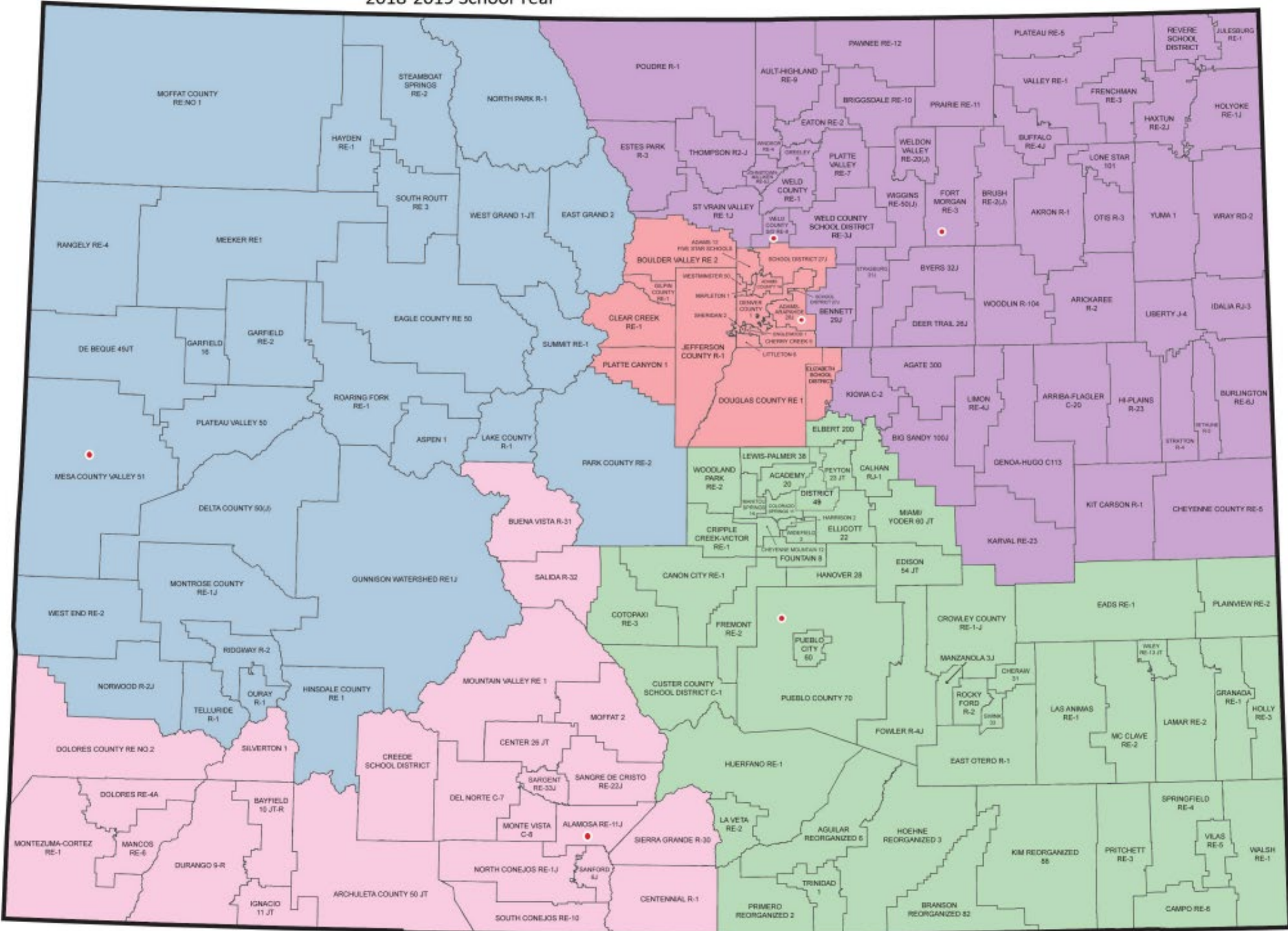


Quality Control & Community Collaboration

Colorado Office of Migrant Education

2018-2019 School Year

- West Central Migrant Region
- Northern Migrant Region
- Southeast Migrant Region
- Southwest Migrant Region
- Metro Migrant Region
- Migrant Education Offices



Top Five In Colorado



1

Companies

1. JBS Beef Plant
2. Cargill Meat Solutions
3. Colorado Mushroom Farm
4. Del Monte Fresh Produce CO
5. Petrocco Farms Inc



2

Qualifying Activities

1. Meat Packing
2. Sorting
3. Pruning
4. Planting
5. Harvesting



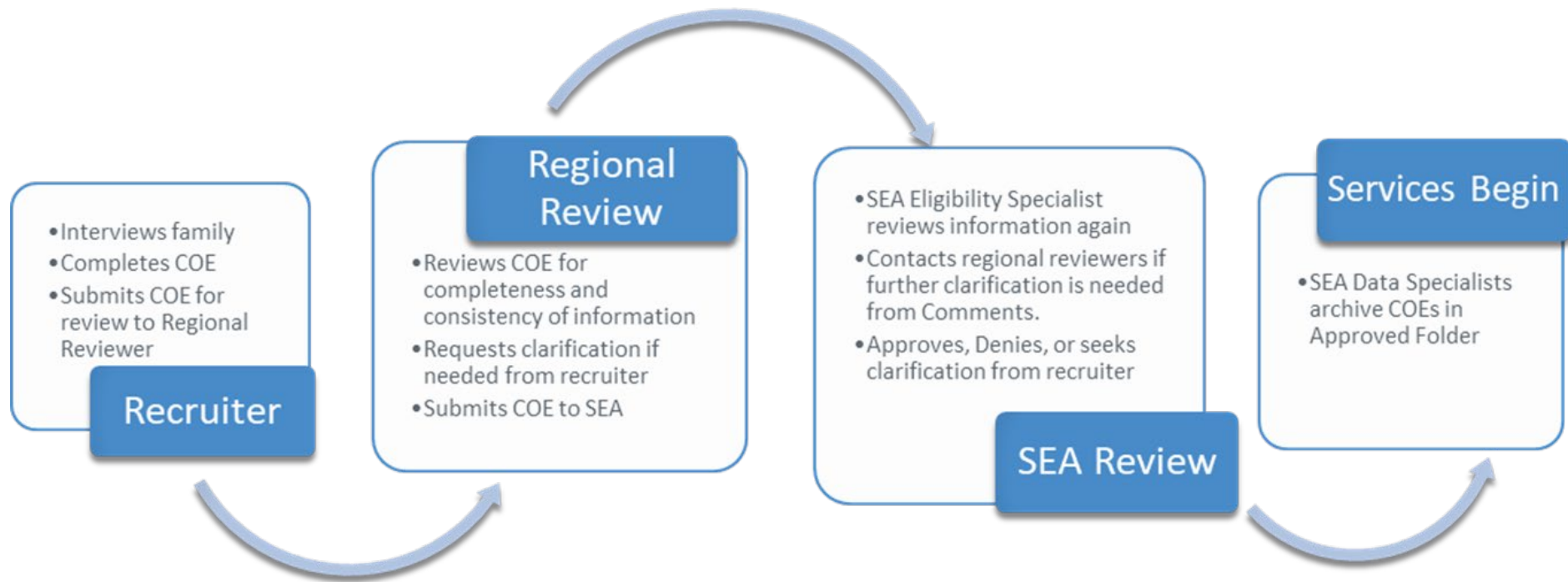
3

Crops

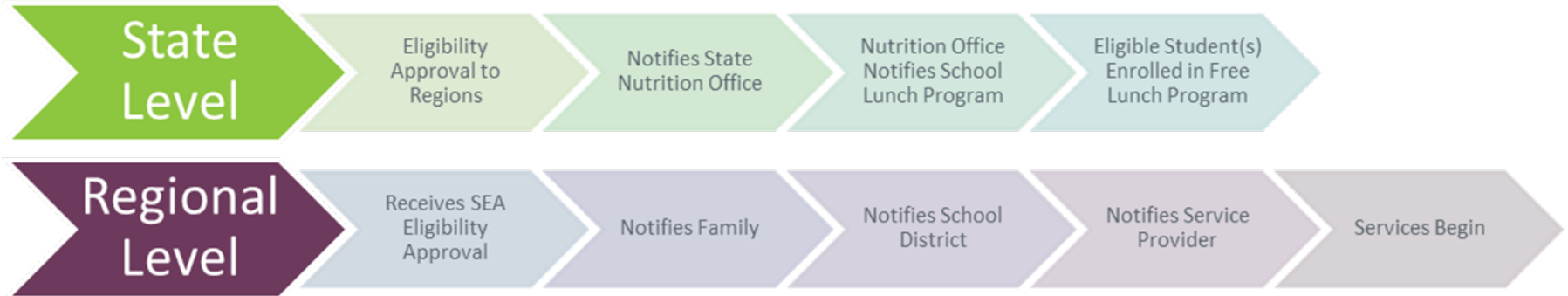
1. Potatoes
2. Mushrooms
3. Peaches
4. Onions
5. Vegetables



Colorado COE Approval Process Flowchart



Colorado COE Approval Communication Flowchart



LogikCO–New Data Management System

SMART was developed to assist children of Migrant Workers who must constantly move around for the work they pursue such as seasonal farm work. The children of migrant workers move with their parents from season to season. The repercussion is that the educational records for these children become scattered, incomplete, or missing altogether. Migrant Education Programs (MEP) are available across the United States with thousands of migrant children needing education services. SMART provides state level Certificate of Eligibility to qualified families of migrant children. Supported by Federally funded [Title I, Part C](#) of the Elementary and Secondary Education Act (ESEA).



LogikCO–New Data Management System

- Held first face-to-face meeting Feb 6, 2018
- SEA will hosted work session with LogikCO March 12-16, 2018
- Regions had an opportunity to meet LogikCO team via webinar on March 13, 2018
- Database launched September 4, 2018

<https://logikco.com/smart/>



Migrant Student System of Support (MS3)

The Migrant Student System of Support (MS3) is a collaboration aimed at bringing together organizations that serve migrant families in Colorado. The goal is to create a seamless system of support for children and youth from birth through their first year in college. Through collaborative partnerships, our organizations work together to promote a greater understanding of each agency's services and eligibility requirements and to support the success of migrant children, youth and families statewide.



MS3 Partners

BUENO-High School Equivalency Program

BUENO- College Assistance Migrant Program at Aimes

Adams State University College Assistance Migrant Program

Colorado State University-Pueblo College Assistance Migrant Program

Metropolitan State University of Denver College Assistance Migrant Program

Otero Junior College Child Development Services

Rocky Mountain Service Employment & Redevelopment

Colorado Department of Labor and Employment

Colorado Department of Education Data, Program Evaluation and Reporting Office

Colorado Department of Education Culturally and Linguistically Diverse Education Office

University of Boulder Center for the Study and Prevention of Violence

Lutheran Family Services



Training + Quality Control + Community Collaboration = Recruitment System of Support!

As a result of piecing together holistic training, quality control procedures, and continual community collaboration, the Colorado MEP has been able to complete meaningful projects as a greater recruitment system of support.



Some examples of what we achieved include...

Achievements of Colorado's RS2

- Targeted Response to Recruitment
 - Intrastate: Regions collaborating, blurring regional “boundaries”
 - Interstate: Sharing & Improving recruitment materials; concentrated recruitment efforts during peak seasons in targeted, difficult areas
- Delivery of Academic Supplemental Services
 - Summer Migrant Youth Leadership Institute (collaborative effort)
 - STEAM
 - Close Up: Civics Course in Washington D.C.
- Coordinated Effort in Referring Families
 - Relationships with community bolster our efforts to connect families with service providers
 - Dental Care, Food Banks, etc.
 - Professionals to provide additional PD to our staff

Activity

Activity: The Components of Your “RS2”

- Every participant will receive a puzzle sheet. You will need to define the pieces that make up your State’s RS2 by writing down those elements on the pieces.
- Feel free to be transparent about what can be improved or implemented in your State - we can all learn from each other this way!



Noemi Aguilar, Principal Consultant

Brenda Meyer, State Data Administrator

Aaron Thompson, ID&R Coordinator

Juanita Arias, State Data Specialist

THANK YOU!!!

